

Have you ever had a time when you needed to add a particular umlaut, symbol or character [such as: å ÿ © ® €] to your document but couldn't remember where it was on the keyboard? Then you might want to check out PopChar X. Once installed, a small "P" appears in the upper left hand corner of the screen. Simply click on the "P" and instantly the PopChar Character Table/window pops up and (if you have it set to "As in Document") it will display all the characters that come with the font you are currently using in your document. Simply scroll down until you find the desired character and click on it. Instantly that character is inserted into your document. It couldn't be easier.

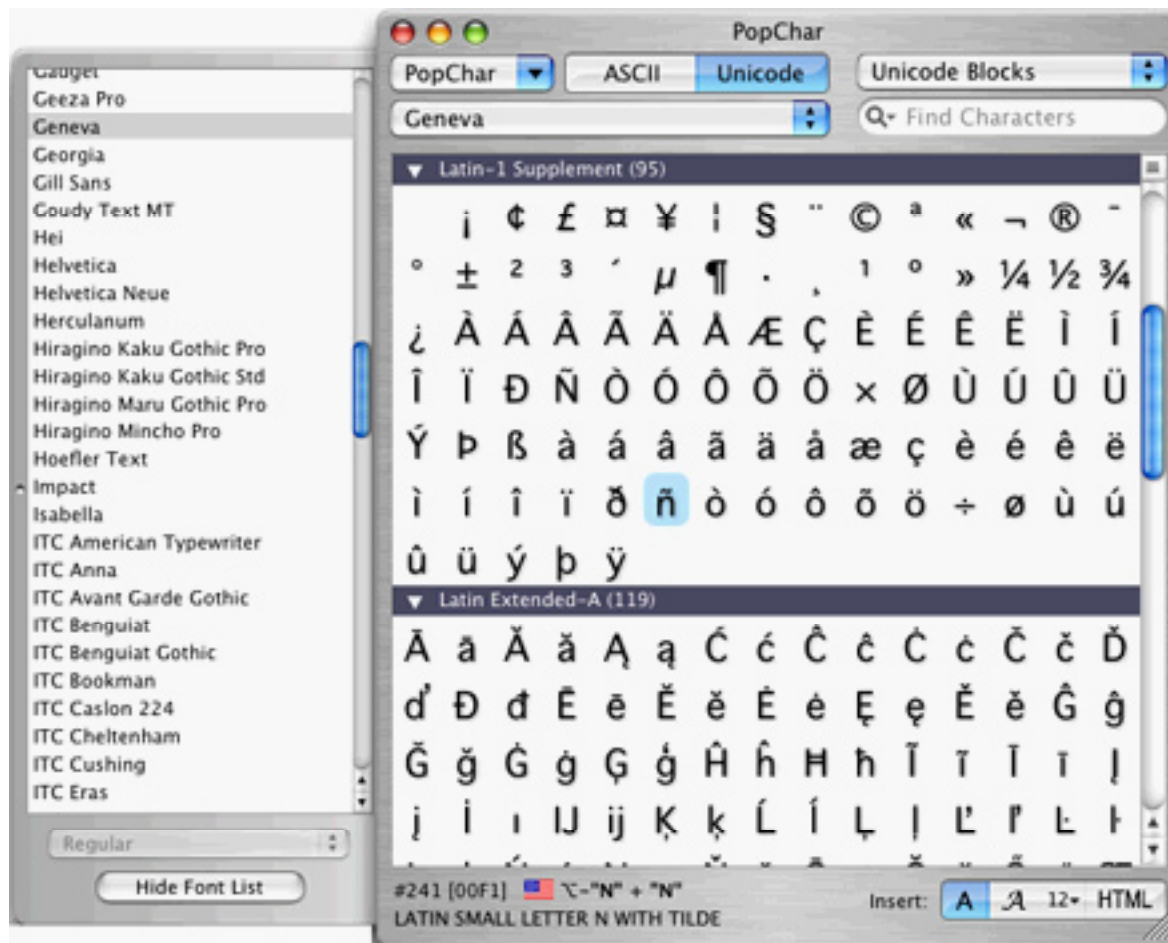


"Why do I need PopChar when I already have Apple's Keyboard Viewer that comes with System X"? Here are my top two reasons:

1) PopChar displays a lot more characters than the Keyboard Viewer. For example, for the LucedaGrande font, Keyboard Viewer displays around 184 Characters whereas PopChar displays around 2211 characters!

2) One of the things I don't like about Keyboard Viewer is that it is fixed at a small font size. There are times when I have a problem deciphering what is on the keys since the font size is so small. On the other hand, PopChar gives you a slider bar that lets you choose the font size.

I like this a lot!



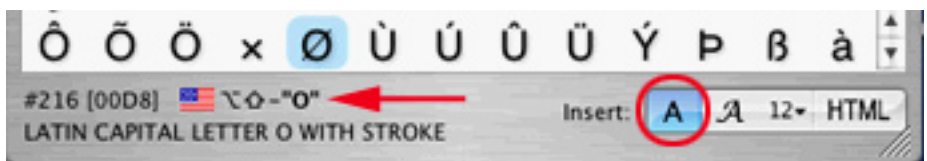
PopChar's Character Table can display the characters of your font as ASCII or Unicode.

Unicode name for over 16,000 characters. So you can search for characters by their name, i.e. "Acute Accent", "Yen sign", or "Tironian sign ET". You can also search for all instances of the letter N, all of the arrows, all the numbers, etc.

When you place your cursor over a particular character, PopChar will display [at the bottom of the PopChar window] the key combination

PopChar supports both ASCII and Unicode fonts. The ASCII mode can use 96 characters per font. The Unicode mode (theoretically) can contain around 1.1 million characters. Though OS X has full Unicode support, not all applications can use Unicode text, so PopChar lets you switch between these two encodings. Within PopChar, the Unicode fonts are arranged in the Standard Unicode blocks or by Scripts or Symbols.

At the bottom right of the PopChar window are three buttons. These let you specify the type of text to insert: Plain Text, Formatted Text (you can specify the font size of the inserted character) or HTML (which inserts characters as named or numeric HTML codes). PopChar knows the

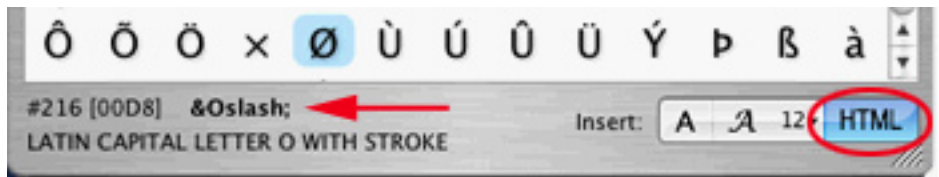


When you place your cursor over a character, PopChar displays the key combination that would invoke that character if you manually typed it in.

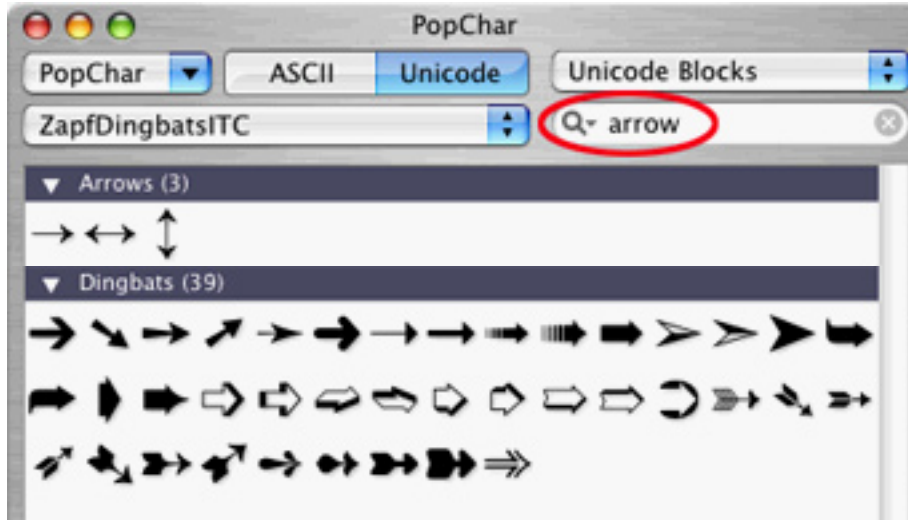
Apple Silicon Summit

necessary to manually insert your desired character-provided there is a key combination. Not all characters have a key combination to invoke them.

PopChar's preference settings let you decide whether PopChar is to disappear right after inserting a character; remain open until you move the mouse outside the PopChar window; disappear



If you choose the HTML mode/button, PopChar will insert the character as HTML code.



You can use PopChar's Search feature to quickly locate your desired character.

when you click outside the PopChar window; or whether it is to remain open permanently.

PopChar's "Recent Character View" displays the most recently used characters. This speeds up the selection process if you repeatedly use a particular character. Another way to speed up your work is PopChar's ability to remember the recently used fonts. PopChar places these in a drop-down menu so you can quickly re-select that font.

If you don't like the small "P" in the upper left-hand corner of the screen, you can move it to the upper right-hand corner or even change it to a "Status Item" icon which will appear in your menubar.

Apple applications and the Finder fully support Unicode, and seem to work perfectly with PopChar. However, I did notice that some of my older applications didn't seem to work with Unicode, but worked fine with ASCII.

My PopChar X test results:

ASCII & Unicode OK

Address Book
Camino
Firefox
iCal
Keynote
Mail
Pages
PhotoShop CS
Safari
TextEdit

ASCII only

Excel X (*older vr*)
Word X (*older vr*)

Doesn't work

InDesign CS (*according to ergonomics software it works in InDesign, so it must be the CS2 vr*)
PowerPoint X (*older vr*)

There is a short [QT Video](#) on ergonomics software's web site that shows PopChar in action.

The Skinny

Evaluation: PopChar X really speeds up the insertion of special characters and is much more feature-rich and helpful than Apple's Keyboard Viewer. I suggest that if you are interested in PopChar X, you download the demo and see if it works with your programs that let you type in text, i.e. word processors, spreadsheets, graphic programs, etc.

Requires: OS X 10.3.9 or higher, 10.4 recommended

Binary Format: Universal

Company: [ergonics software](#)

Street Price: \$29.99

[Demo Available](#)