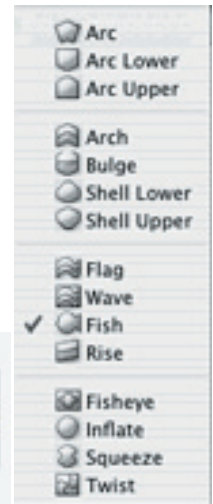




Adobe Photoshop CS2 is a powerful photo retouching, image editing, and color correction tool. This software is versatile enough to accommodate the needs of average user and experts alike. It provides tools to retouch proofs, merge and edit color images, composite artwork, make collages or montages, and create color separations for individuals that want to print their documents at a professional printing service.

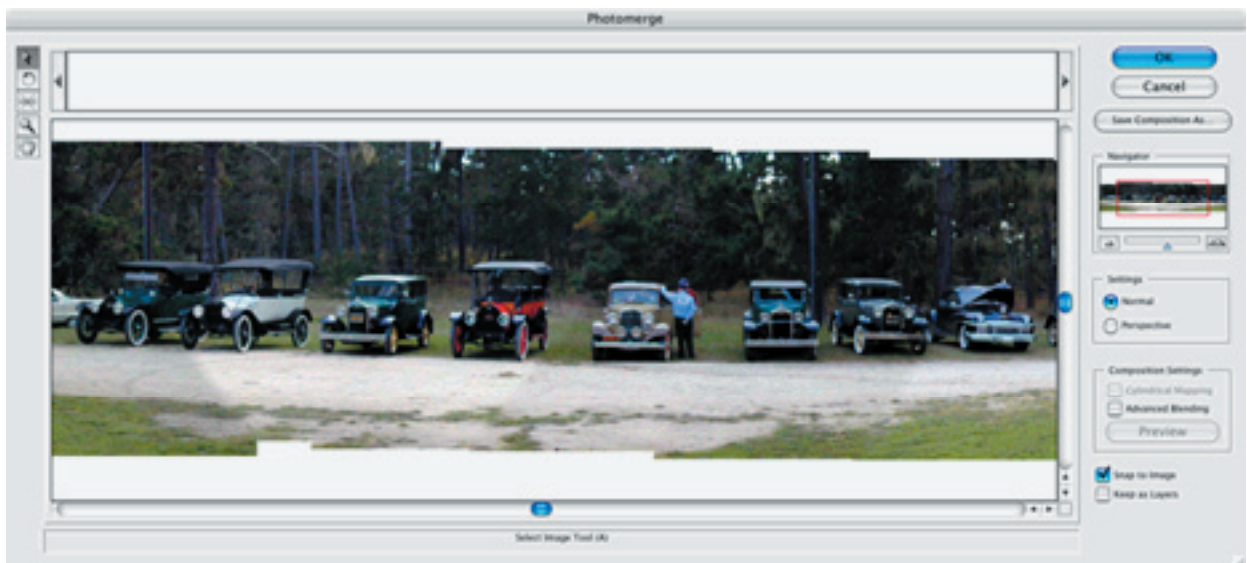
### New Features

- The File Browser has been replaced by the Adobe Bridge application. Adobe Bridge can organize, browse, or locate the files that you need.
- Photoshop now has a WYSIWYG font menu that lets you see the font families and font styles (right in the menu) plus it also shows little icons that let you know if the font is; Postscript, OpenType or TrueType.
- There is a new Animation Palette that helps you create Web Graphics.
- Photoshop's help file is now a separate application versus the old way that used a web browser.
- The Spot healing tool removes imperfections and blemishes from your photos.
- Multi-image camera RAW. In other words, with Photoshop's support for a wide range of digital cameras, you can now convert to Digital Negative format, adjust settings and edit batches of images.
- Photoshop now supports High Dynamic Range (HDR) images that are 32-bit-per-channel.
- You can now maintain your color settings throughout your Adobe Creative Suite components.
- One-click Red eye correction. Though you could correct Red Eye in the previous version using the Color Correct tool there is now a tool that is solely devoted to removing Red Eye. But this tool isn't limited to just removing red eye it will also remove green and white eye that appears when you take a flash photo of animals.
- You can Customise Photoshop's menus, workspaces and the size of the font that is displayed in the options bar, palettes, and tool tips.
- Once you specify the perspective planes in an image using Photoshop's Vanishing Point option; you can clone, paste, and paint image elements into an image, matching the original image's perspective planes.
- Smart Objects are one file embedded in another-such as vector artwork from Illustrator. Smart Objects let you perform nondestructive transforms i.e. you can scale a layer without losing its original image data.
- New Blur filters: Shape Blur, Box Blur, and Surface Blur.
- Digital Noise Reduction filter
- The Smart Sharpen filter uses new algorithms for better edge detection and reduced sharpening halos.
- Photoshop's Optical Lens Correction filter helps correct lens aberrations such as pincushion and barrel distortion and chromatic aberrations.



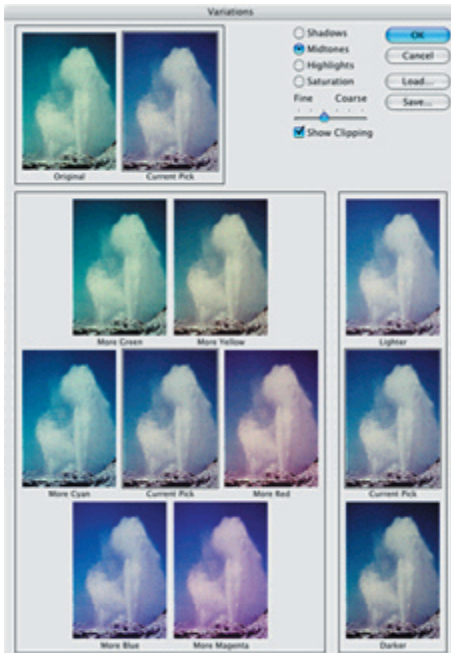
The Warp command lets you warp text and graphics using predefined shapes or you can customise your own shape.

Are you one of those individuals who snap off multiple pictures to create a panorama of the scene before you; only to have to tape the photos together to include them in your photo album? If so, you will like Photoshop's Photomerge feature. All you have to do is group all of your pictures in a folder and tell Photomerge to merge them. It will look at each



Photoshop's Photomerge will merge photos together to create panoramas. BTW: This panorama was created from six different photos.

picture comparing them to see where they overlap. Moments later you have a seamless panorama. Simply print it out on your color printer and your set to go. BTW: I tested Photomerge with six different sets of photos. For some reason it could only figure out how to place together one of the sets of pictures. I was pleased with this merging since one picture was darker than the other. But one in six isn't very good-I expected better. I remembered successfully using Photomerge with my copy of Photoshop Elements, so I dug out the CD and installed Photoshop Elements. To my surprise, it was able to merge one of the photo sets that Photoshop CS2 couldn't! I also remembered that Photoshop Elements has a nice set of pictures that it uses in its tutorial, so I dug those out and tried them in Photoshop CS2. To my delight, all six images (of cars-pictured on the previous page) merged together seamlessly. I guess Photoshop CS2 doesn't like my landscape panoramas. But all is not lost, Photomerge does let you manually merge the pictures. When you drag the second picture on top of the first-it becomes transparent so you can easily sync the two pictures.



**The Variations command shows you what your image will look like with different color variations applied.**

and green hues or the brightness-all with a single click on one of the thumbnails. The Variations window also has before and after copies of your image.

If you make modifications to your image that you don't like, Photoshop has a History palette that lets you step back to any modification made during the current session [The preference dialog box lets you specify the total number of Remembered States per session. After reaching this limit, the oldest modification is deleted when you make a new modification]. If there is a step or "State" of your image that you want to preserve through out your work session [regardless of the number of modifications], Photoshop lets you take a snapshot of the state. This way you can still go back to the Snapshot and start all over again.

Photoshop includes over 80 plug-in modules. If that's not enough for you, you can use plug-in modules from other Photoshop compatible applications.

Photoshop's Liquefy filter makes your image react as if it was soft Putty. The tools available are forward warp, twirl clockwise (it will go counter-clockwise too), push left, mirror, pucker, turbulence, bloat, freeze mask, and thaw mask. The hair on your model isn't puffy enough? Well add volume to it with the Warp tool. While your at it, why not curl its ends with the twirl tool? All modifications are done in a preview window and aren't applied until you click the OK button.

If you want to work on an digital image that is from a digital camera or one that you want to scan, you can scan them directly into Photoshop (provided you have a compatible TWAIN plug-in module and drivers).

Photoshop's Clone tool will sample an area and then let you clone that sample onto another area. Say you scan in an old photograph that has a tear in its upper corner. By cloning the area next to the tear, you can cover up the tear with matching background color and no one will be the wiser. I use it all the time to remove scratches and dust from scanned slides. And Since the slides have rounded corners, I use it to extend the sky or ground into the corners to make it a square image. It's a very handy tool.

Photoshop's Picture Package command lets you place multiple pictures on the same page; similar to the portrait sheets you get from profes-

Across the top of the screen (and just under Apple's menu bar) is the Options Bar. Every time you choose a tool from Photoshop's tool Palette, tool specific options appear in the Options Bar. Off to the right of the Options Bar is a Palette Well that lets you dock your frequently used palettes. This helps reduce clutter on your desktop.

Photoshop uses layers in creating your image. This makes managing and compositing different elements in your image much easier. Layers are also helpful when you want to make modifications without changing the original image. The "Layers Palette" gives you control over the various layers and lets you change the order of, link, group or even merge the layers together. Each layer has a name and a miniature thumbnail that shows the layer's contents for easy identification. Layers can be visible or hidden so you can work on it separately or with the rest of the layers.

The "Adjustment Layer" lets you apply tonal and color-correction effects to specific parts of your image without permanently changing the image. This way you can try out various effects on your image and then cancel them if they didn't bring up the desired results.

You can create type directly on the screen (no separate font window). The type stays editable and can be warped and twisted using the Warp tool. The Warp tool can also be used to warp any part of your image. There are fifteen pre-defined warping patterns, i.e. Arc, Flag Twist. You can also manually warp your image by pushing and pulling on a grid that is placed around your selected image.

The Variations command reminds me of a commercially sold plug-in that would slice your image into strips and shows you how each strip would look with a different color applied. Instead of strips, Photoshop gives you thumbnails. There are six color variations, one lighter, one darker plus an original and three current pick thumbnails. You can increase the red, blue, yellow, magenta, cyan,



**The Picture Package command lets you place multiple pictures on the same page**

sional photography studios. There are many layouts to choose from: everything from two 5 x 7's to nine 2.5 x 3.25's per sheet.

You can create a Web Photo Gallery of pictures that you want your friends to be able to view from the web. Photoshop's Web Photo Gallery command will automate the process. After you choose the style or look of your Photo Gallery from the provided style templates, Photoshop creates thumbnails of your images that link to each full sized image. If you are proficient with HTML, you can create your own styles.

The Actions Palette will repeat most keyboard commands, dialog box settings, menu choices, and button pushes. So if there are multiple task or adjustments that you repeatedly apply to your images, you can create an Action that will repeat the steps upon command. You can add a Stop to the action so that it will stop when it reaches a certain dialog box or step, letting you select the new adjustment settings or select the area you want modified; and then the Action sequence will proceed with its designed task. Over 110 Pre-defined actions come with Photoshop. I really like the Actions function. With my own copy of Adobe Photoshop CS, I have two sets of Actions that I created. The first set of Actions is geared toward my reviews. I have three actions that reduce the size of my screen dumps (by 75, 65 and 50 percent). I use one action that flattens the image, and another that not only flattens the image, but also saves the document to the desktop. My second set of Actions is geared toward my scanned slides. Since I scan about 20 slides at a time, I created an Action that would copy a single slide [from the group] and save it to a new document that is formatted at 720 DPI. The remaining Actions apply different color corrections to the slides, plus flip the image vertically or horizontally. These actions have greatly reduced the time required to fix my scanned slides or prep screen dumps for my reviews. BTW: the Actions that I made in my CS version were easily brought into the CS2 version that I am reviewing.

---

## The Skinny

**Evaluation: I have owned and used Photoshop for years. I don't know how I would get along without it. The new CS2 version has new features that adds to its usefulness. So if you deal with a lot of images, and can afford its price, you should look into getting this program. I encourage those wanting the Photomerge feature to download the demo and see if you have better luck than me.**

**The one thing I am not happy about has nothing to do with it's usefulness. It's Photoshop CS2's mandatory product activation. You are allowed to use the program for thirty days. Before the deadline you must either phone Adobe or go to the their web site to activate your program. If you don't, you won't be able to use it further. I understand Adobe's reasoning on this- to prevent piracy, but I don't like it when companies do this. What if the company closes their doors permanently? Get a new computer and you just lost the use of your program. This is just my pet peeve. But I thought I should mention the new procedure anyway.**

**Requires: Mac G3, G4, or G5, OS X 10.2.8-10.4.x, 320MB RAM (348MB recommended), 750MB hard drive space, 1024 x 768 monitor resolution with 16-bit video card, CD ROM, An Internet or phone connection is required for product activation.**

**Company: [Adobe](#)**

**Street price: \$589**

**[Demo Available](#)**